

CLEVELAND GAMBETTI

OPERATORS MANUAL

&

PARTS LIST

model

ECO GOLF

ECO300

ECO400

ECO600



CLEVELAND ALLIANCES LTD
INDUSTRY AGRICULTURE AMENITY

Thank you for purchasing your Cleveland Gambetti Sprayer. Here are the do's and don't of operation and how to keep spraying without any hassles.

Disclaimer:

Cleveland Alliances Ltd accept no liability for damage caused to the machine or the environment or persons through operation or misuse of the machine. The operator must be competent, trained, and have the appropriate certification.

DO NOT USE THIS MACHINE UNLESS YOU HAVE BEEN TRAINED TO DO SO.

Spraying is a delicate operation and involves the risk of contamination of people, animals and the environment. For this reason the functionality of all machine components must be carefully ensured. - The operator is always the most exposed person to the used chemical products and he/she must always adopt all the necessary measures for his/ her personal safety at work. Refer to the danger indications on the labels of the products used. - Always work in the correct weather conditions and follow the weather forecasts for the entire period of application. - Dose the product to be poured into the tank correctly. - Make sure that the chemical substances used are compatible with the construction materials of the machine. - Never leave chemical substances on the tank for more than a few hours. - Carefully follow the regulations concerning the possession and use of plant protection products and make sure that people and animals cannot access them. - After each use carefully wash the containers of the mix and the dosing tools that have been used. - Do not use the machine without hand washing tank or if it is not full. - The machine should be cleaned in the same place where it is filled, i.e. an area where the water can be collected in a disposal manhole. - Do not discharge the mixing residues to the watercourses, sewers and public areas.



Operation:

Do not just bash on, hoping you're going to get it right!!! You're applying thousands of pounds worth of product... lets do a good job shall we.....

1. Connect to the tractor. Make sure the sprayer chassis is sitting level and the nozzles are 50cm from the ground when the machine is at the working position on the tractor lift arms.
2. Connect the PTO shaft. **THE ENGINE MUST NOT BE RUNNING WHEN CONNECTING THE SHAFT.** Connecting a PTO shaft with a running engine is dangerous! Don't become a statistic!!!



3. Put water inside the tank. **ONLY ADD PRODUCT** when there is at least 150lt of water in the tank. The pump **MUST BE RUNNING** via the PTO shaft when adding **CHEMICAL**. If you just add chemical without the pump running you risk choking your suction filter which will be a real pain in the backside for you.
4. Add the rest of the water to the required level.

Controls:

Boom Section Valves

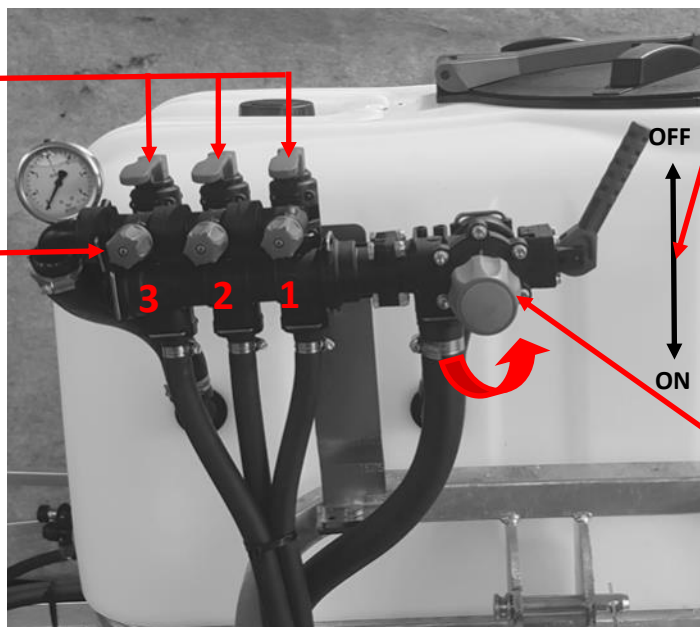
Lever UP = section ON

Lever DOWN = section OFF

Pressure Balancing

To set the pressure balancing valves, follow this procedure:

1. Set the total boom spraying @ 3bar pressure
2. Turn off section 1, if the pressure increases above 3 bar, turn the balancing valve anti clockwise until the pressure is at 3 bar. If the pressure decreases below 3 bar, turn the balancing valve clockwise until the pressure is at 3 bar. Switch the section back on so the whole boom is spraying. Repeat the procedure for sections 2 & 3



Main On / Off

Pressure adjust

Turn **clock wise** to **increase** the pressure. Turn **anti clock wise** to **decrease** the pressure

Tank Suction & Tank Drain

Underneath the main tank , to the left hand side of the pump is a valve which has 3 positions.

CLEAN THE FILTER POSITION (12 oclock position)

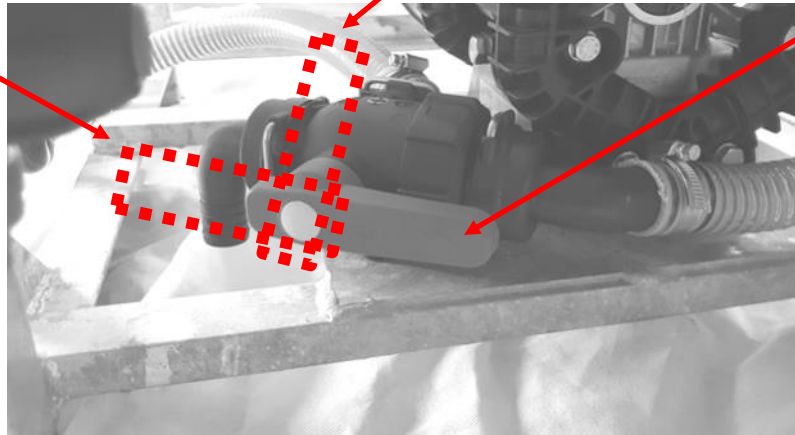
The valve must be pointing vertical when cleaning the filter. This closes the tank and means the filter can be cleaned with a full tank of product.

DRAIN POSITION

(9 oclock valve position)

Tank Drain

The valve must be pointing left to allow the tank contents to drain out

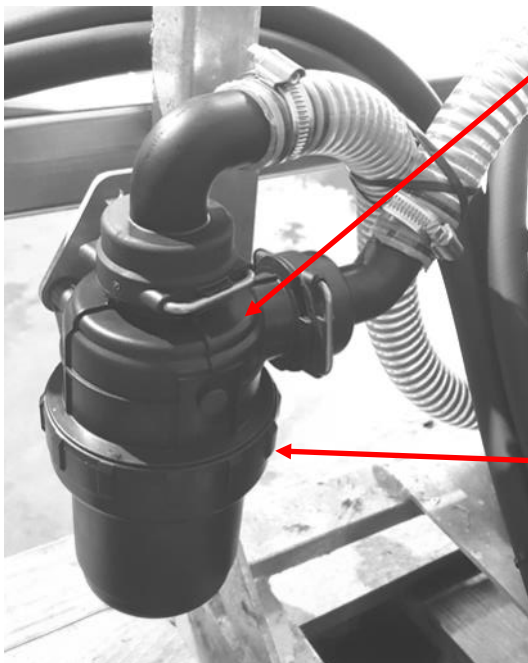


SPRAYING POSITION

(3 oclock valve position)

Tank Suction

The valve must be pointing right to allow the tank contents into the system.



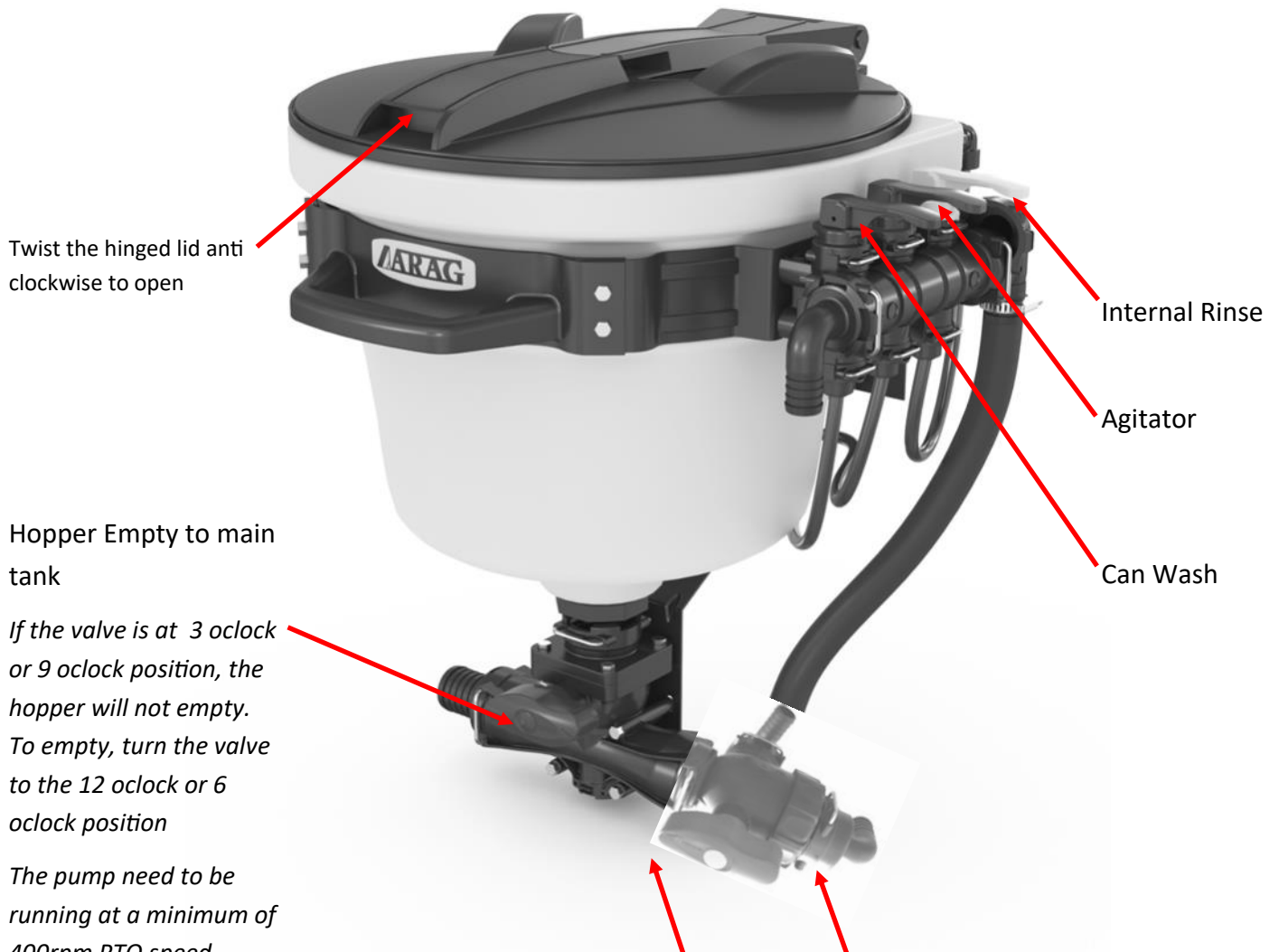
FILTER

To clean the filter, place the valve shown above in the 12 oclock position, then unscrew the large nut from the filter housing and remove the bowl. Remove the filter element and clean in hot water. Then refit. Do not lose the large 'o'ring which is inside the housing. It will leak if you do lose it and you wont be able to spray.

Filter Nut

Chemical Mixer Hopper (option)

To use the induction hopper, there must be water in the main tank and the pump needs to be running at a minimum PTO speed of 400rpm.



Arrow on the valve handle pointing towards the centre of the hopper (left) means the hopper is on and ready to use

Arrow on the valve handle pointing towards the boom (right) means the hopper is off and you are ready to spray.

THE MACHINE WILL NOT SPRAY IF THE HOPPER IS ON

Boom Operation

6m boom

The 6m boom has 4 nozzles per boom section at 50cm spacing. The boom is equipped with spring adjusted break-back devices in case of collision. The tension on the springs can be adjusted by the 30mm nut on top of the boom hinge. Do not make too tight. Doing so can cause too much rigidity and cause the boom to bend in there is collision. Usually 20 to 25mm of thread above the adjustment nut is adequate.





To open the boom:

- Pull the right hand boom arm towards you and open it towards the right hand side of the machine. Be sure to locate the boom in the fully open position
- Once the right hand boom arm is secured, pull the left hand boom arm towards you and open it towards the left hand side of the machine. Be sure to locate the boom in the fully open position

On a weekly basis, APPLY GREASE to the folding mechanism when the boom arm is half way between being full open and fully closed. **WARNING: DO NOT MOVE THE BOOM ARM WHEN YOU ARE GREASING THE BOOM HINGE. YOU MAY TRAP YOUR FINGERS IN THE MECHANISM. TAKE NOTE**



Nozzle Application Chart

COD. 110° CODE 110° CÓD. 110°	 bar	 drop 110°	 l/min	l/ha (spazio tra gli ugelli: 50 cm) l/ha (nozzle spacing: 50 cm) l/ha (espacio entre las boquillas: 50 cm)										 drop 80°	COD. 80° CODE 80° CÓD. 80°
				4 km/h	6 km/h	8 km/h	10 km/h	12 km/h	14 km/h	16 km/h	18 km/h	20 km/h	25 km/h		
SF11001	1.5	F	0.28	85	57	42	34	28	24	21	19	17	14	F	SF08001
	3	VF	0.40	120	80	60	48	40	34	30	27	24	19	VF	
	5	VF	0.52	155	103	77	62	52	44	39	34	31	25	VF	
	7	VF	0.61	183	122	92	73	61	52	46	41	37	29	VF	
SF110015	1.5	F	0.42	127	85	64	51	42	36	32	28	25	20	F	SF080015
	3	VF	0.60	180	120	90	72	60	51	45	40	36	29	VF	
	5	VF	0.77	232	155	116	93	77	66	58	52	46	37	VF	
	7	VF	0.92	275	183	137	110	92	79	69	61	55	44	VF	
SF11002	1.5	F	0.57	170	113	85	68	57	48	42	38	34	27	F	SF08002
	3	F	0.80	240	160	120	96	80	69	60	53	48	38	F	
	5	VF	1.03	310	207	155	124	103	89	77	69	62	50	VF	
	7	VF	1.22	367	244	183	147	122	105	92	81	73	59	VF	
SF110025	1.5	F	0.71	212	141	106	85	71	61	53	47	42	34	---	NA
	3	F	1.00	300	200	150	120	100	86	75	67	60	48		
	5	VF	1.29	387	258	194	155	129	111	97	86	77	62		
	7	VF	1.53	458	306	229	183	153	131	115	102	92	73		
SF11003	1.5	M	0.85	255	170	127	102	85	73	64	57	51	41	M	SF08003
	3	F	1.20	360	240	180	144	120	103	90	80	72	58	F	
	5	F	1.55	465	310	232	186	155	133	116	103	93	74	F	
	7	VF	1.83	550	367	275	220	183	157	137	122	110	88	VF	
SF11004	1.5	M	1.13	339	226	170	136	113	97	85	75	68	54	M	SF08004
	3	F	1.60	480	320	240	192	160	137	120	107	96	77	F	
	5	F	2.07	620	413	310	248	207	177	155	138	124	99	F	
	7	F	2.44	733	489	367	293	244	209	183	163	147	117	F	
SF11005	1.5	C	1.41	424	283	212	170	141	121	106	94	85	68	C	SF08005
	3	M	2.00	600	400	300	240	200	171	150	133	120	96	M	
	5	M	2.58	775	516	387	310	258	221	194	172	155	124	M	
	7	M	3.06	917	611	458	367	306	262	229	204	183	147	M	
SF11006	1.5	C	1.70	509	339	255	204	170	145	127	113	102	81	C	SF08006
	3	C	2.40	720	480	360	288	240	206	180	160	144	115	C	
	5	C	3.10	930	620	465	372	310	266	232	207	186	149	C	
	7	C	3.67	1.100	733	550	440	367	314	275	244	220	176	C	
SF11008	1.5	C	2.26	679	453	339	272	226	194	170	151	136	109	C	SF08008
	3	C	3.20	960	640	480	384	320	274	240	213	192	154	C	
	5	C	4.13	1.239	826	620	496	413	354	310	275	248	198	C	
	7	C	4.89	1.466	978	733	587	489	419	367	326	293	235	C	
SF11010	1.5	C	2.83	849	566	424	339	283	242	212	189	170	136	C	SF08010
	3	C	4.00	1.200	800	600	480	400	343	300	267	240	192	C	
	5	C	5.16	1.549	1.033	775	620	516	443	387	344	310	248	C	
	7	C	6.11	1.833	1.222	917	733	611	524	458	407	367	293	C	
SF11015	1.5	VC	4.24	1.273	849	636	509	424	364	318	283	255	204	---	NA
	3	VC	6.00	1.800	1.200	900	720	600	514	450	400	360	288		
	5	VC	7.75	2.324	1.549	1.162	930	775	664	581	516	465	372		
	7	VC	9.17	2.750	1.833	1.375	1.100	917	786	687	611	550	440		

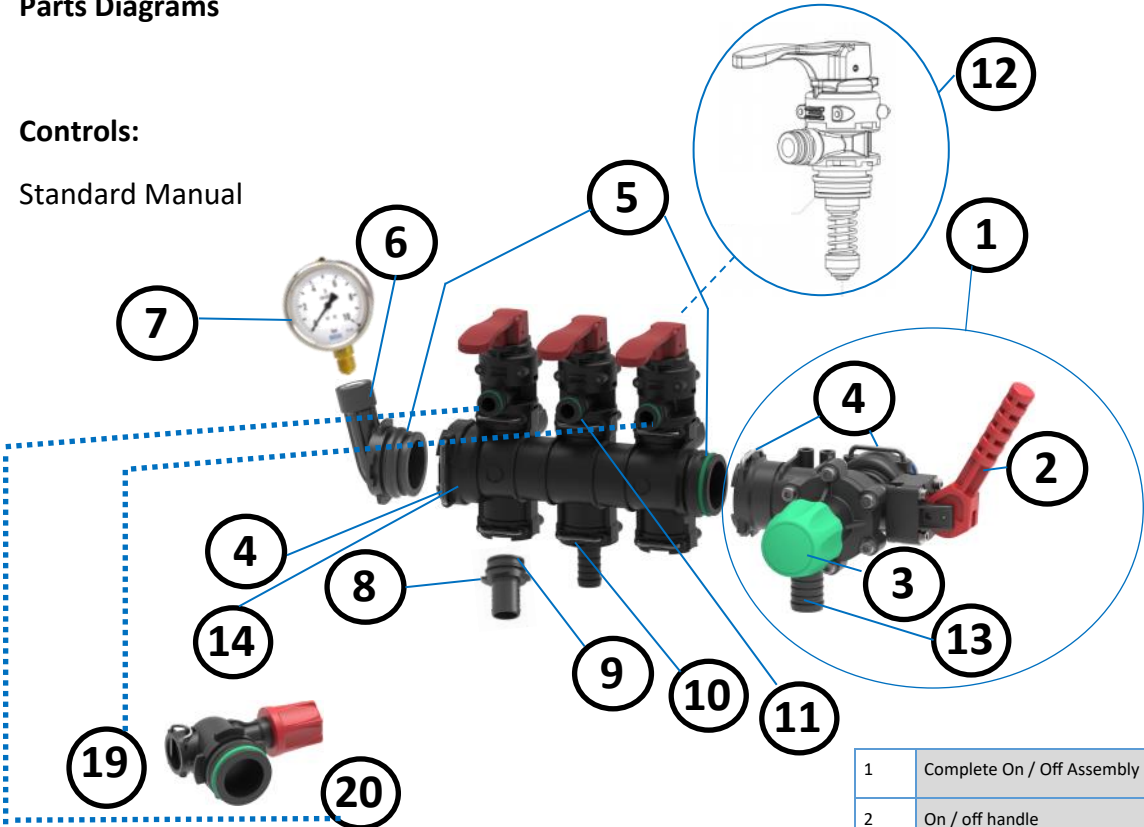


PARTS LIST

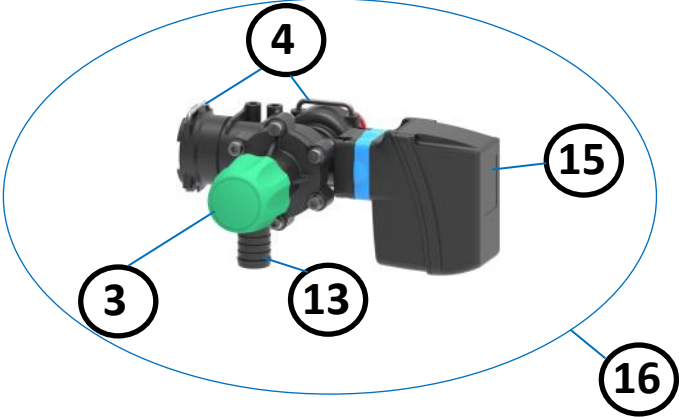
Parts Diagrams

Controls:

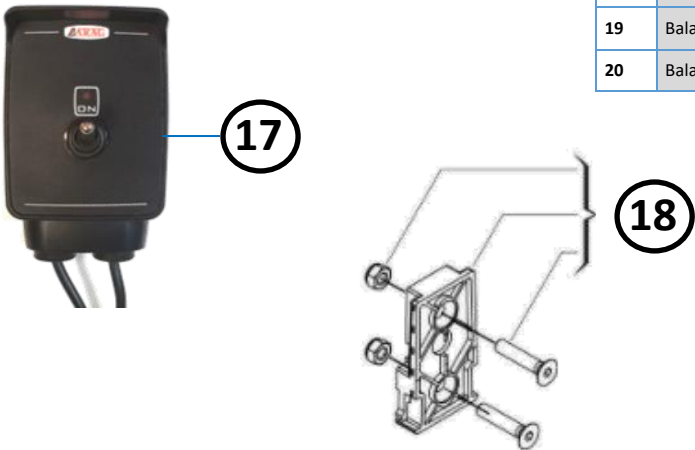
Standard Manual



Electric on/off Main Control (option)

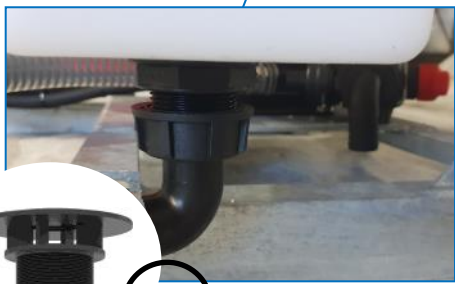
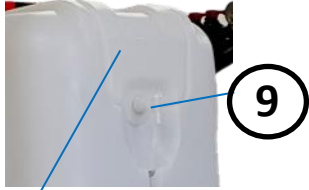
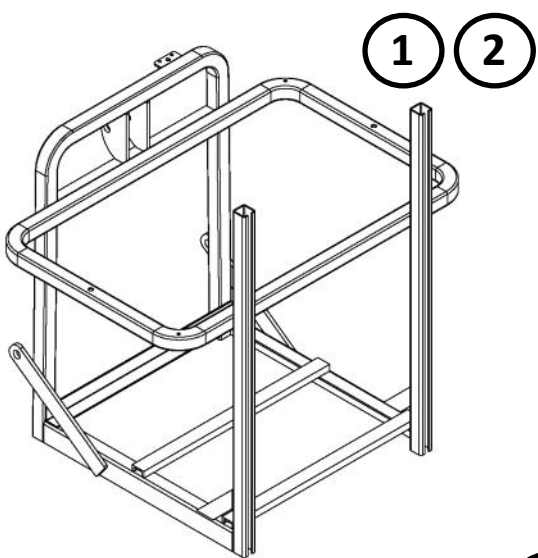


Electric on/off in cab switch box with wiring loom (option)



1	Complete On / Off Assembly	202174T
2	On / off handle	010202164
3	Pressure adjustment Handle and mechanism	105202174
4	Stainless steel fork	500010
5	O ring	V36011G
6	Gauge control holder	053912
7	Pressure gauge	910010
8	Boom hose tail	3131901
9	O ring	85011G
10	Stainless steel fork	300010
11	O ring	65011G
12	Handle kit	005160T364
13	Hose tail	C52A100374
14	3 section valve unit	360364T
15	Electric on/off motor	0090568
16	Complete electric on / off	205178T
17	Switch box & wiring	00158664
18	Control mounting bracket	015500764
19	Balancing Valve Closed End	0080101364
20	Balancing Valve Open through	0180103164

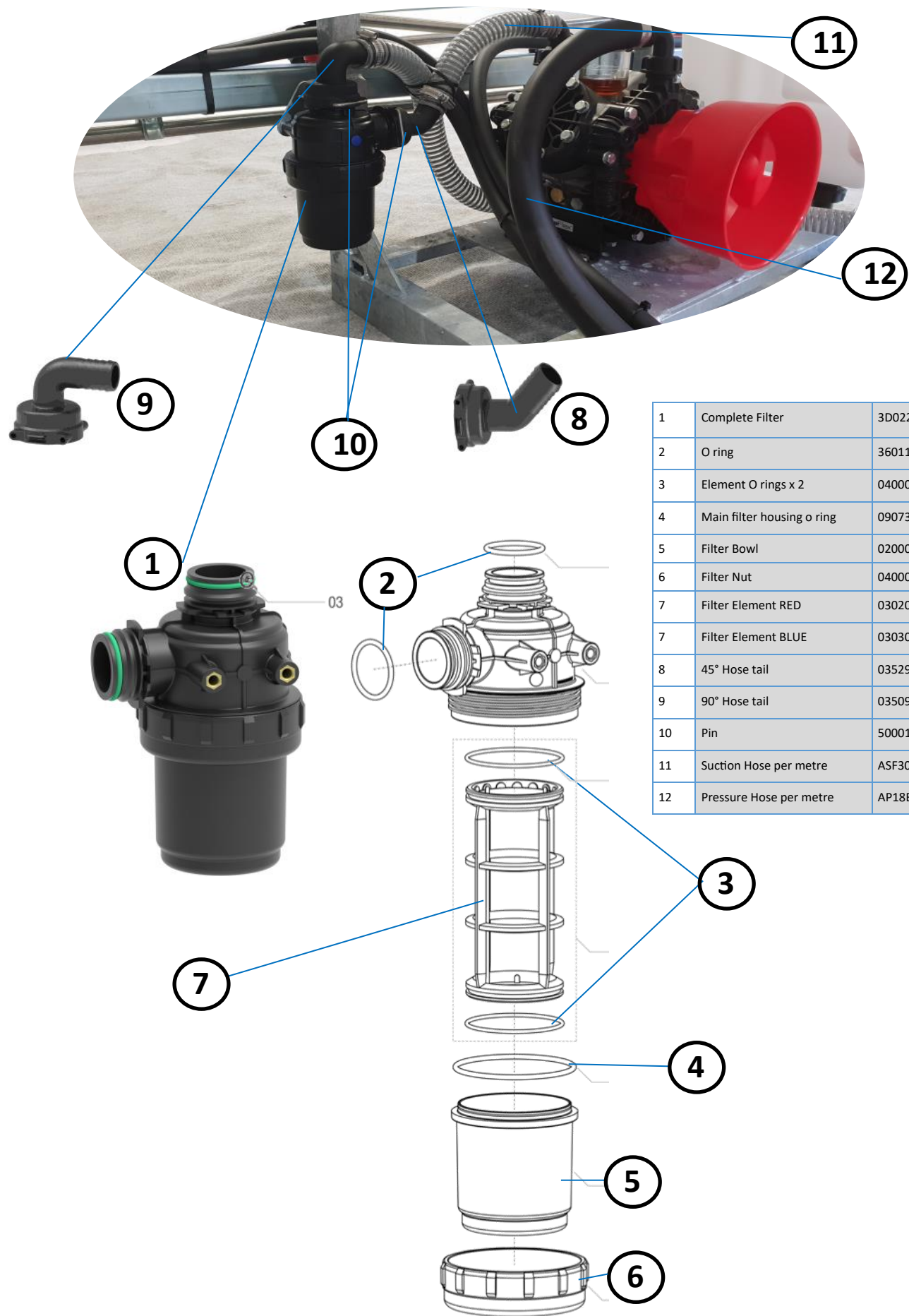
Chassis , Tank, Tank Connections



1	Frame for 300 & 400lt	1HB0003
2	Frame for 600lt	1HB0004
3	300lt tank	300ECO
4	400lt tank	400ECO
4.1	600lt tank	600ECO
5	Tank lid Complete	060653
5.1	Filter basket	621003
6	90° hose tail	5122311
7	Rubber washer	G40002
8	Back nut	0202502
9	Handwash tap	9003555
10	Handwash tank ECO	HWECO
11	Sight Tube	AAHNA16
12	Hose Clip	HCLIP30
13	Lower Link Pin	AR525
14	Top link pin	AR524
15	Filter Basket	621003
16	Tank return fittings x 2	624811
17	Seal	40004G

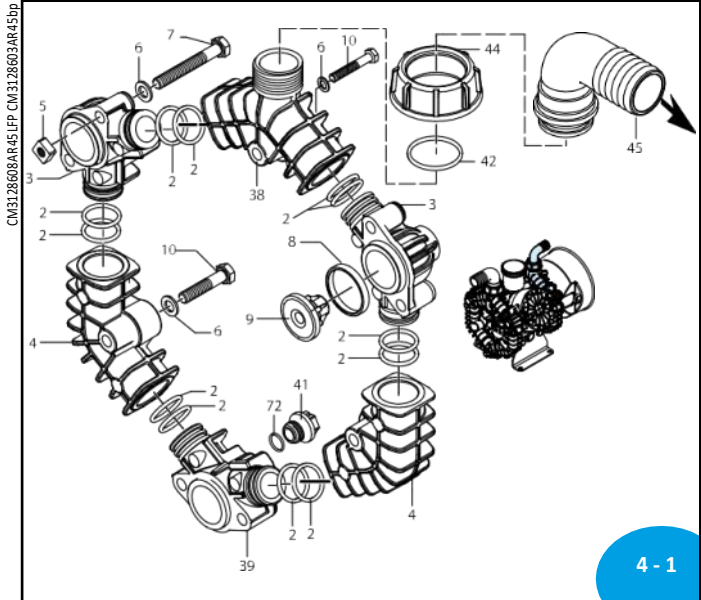
18	45° hose tail	0352911
19	Pin	500010
20	Complete Valve	54442554
21	90° hose tail	5250911
22	Anti vortex tank fitting	501405
23	Seal	50004G
24	Back nut	0502502
25	90° hose tail	035611
26	O ring	15001G
27	Fly nut	0502002
28	Hose clip	HCLIP40

Suction Filter

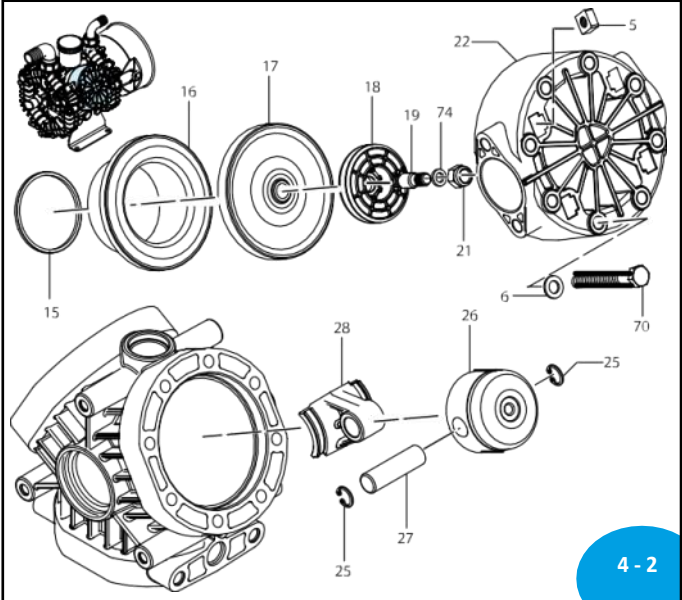


1	Complete Filter	3D02213
2	O ring	36011G
3	Element O rings x 2	040002264
4	Main filter housing o ring	090732454
5	Filter Bowl	0200002213
6	Filter Nut	040000013
7	Filter Element RED	0302002213
7	Filter Element BLUE	0303002213
8	45° Hose tail	0352911
9	90° Hose tail	0350911
10	Pin	500010
11	Suction Hose per metre	ASF30
12	Pressure Hose per metre	AP18B25

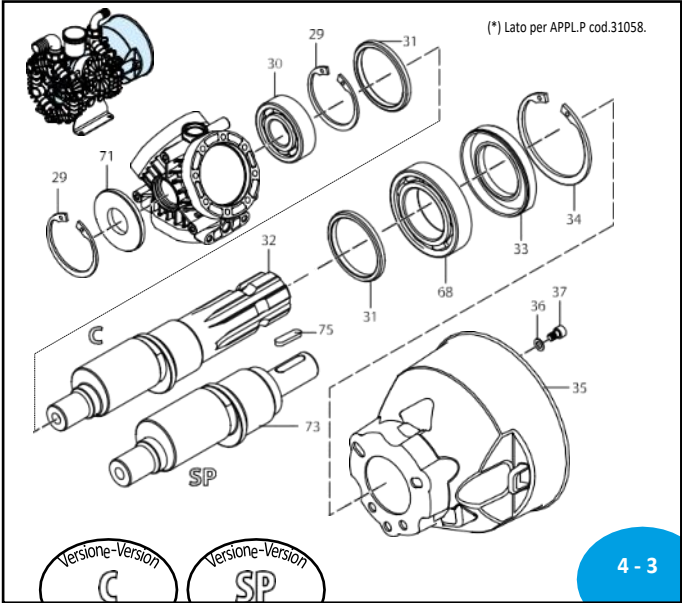
Pump



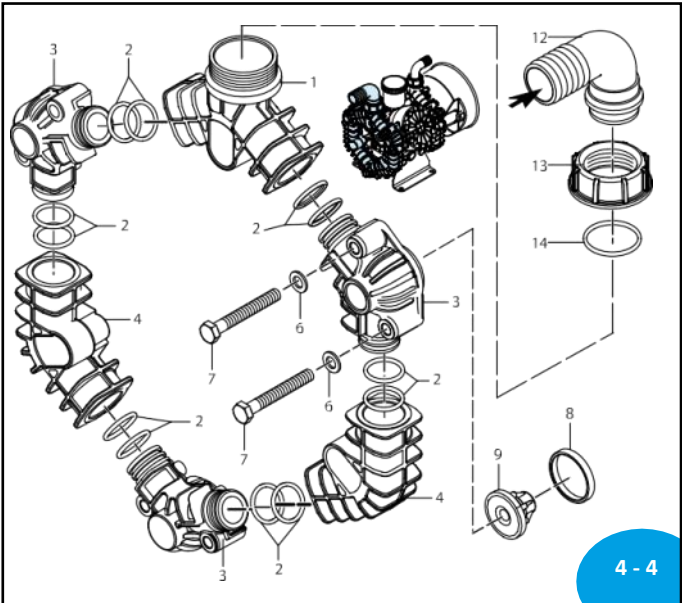
SL000327-DU



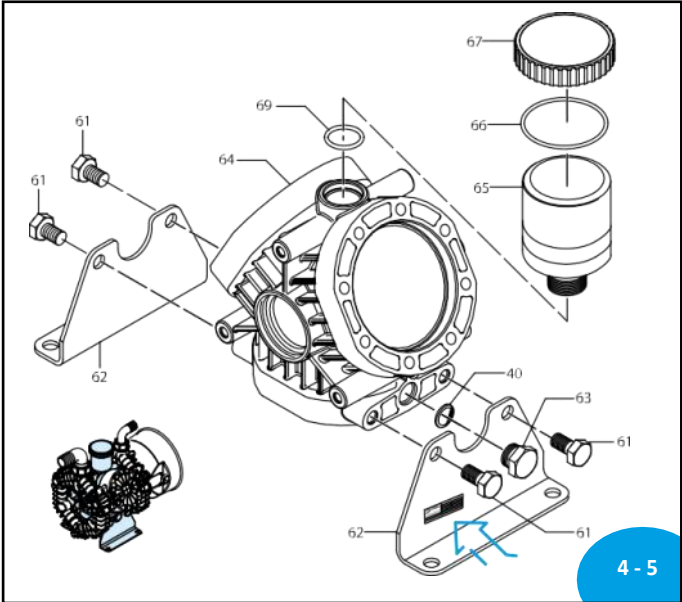
SL000203-MV



AR000326_KQ



SL000328-DU



SL000206-AQ

Pump Hose Tails

Suction = 30mm



036611



06002002



16001G

Pump Hose Tails

Pressure = 25mm



04002002



04002002



14001G

COMPLETE PUMP PART NUMBER: A00023R

Pos	Cod.	Descrizione	Description	Q.ty	Note
1	3120410	Condotta aspirazione	Line	1	
2	720031	Guarnizione OR Ø 22,22x2,62	O-ring	24	Viton AR45LFP
3	720030	Guarnizione OR Ø 22,22x2,62	O-ring	24	AR45bp
4	3120050	Condotta mandata	Line	5	
5	3120060	Condotta asp./mandata	Line	4	
6	3120510	Dado M8	Nut	12	Inox
7	3120760	Rondella	Washer	42	Inox AR45LFP
8	3120761	Rondella	Washer	42	Z/B AR45bp
9	3120250	Vite TE M8x60	Screw	12	Inox C10 AR45LFP
10	3120251	Vite TE M8x60	Screw	12	C10 AR45bp
11	3120680	Guarnizione verde	Gasket	6	Viton AR45LFP
12	3120230	Guarnizione	Gasket	6	AR45bp
13	3129051	Valvola completa	Complete valve	6	AR45LFP
14	3129050	Valvola completa	Complete valve	6	AR45bp
15	621782	Vite TE M8x40	Screw	6	Inox C10 AR45LFP
16	621780	Vite TE M8x40	Screw	6	C10 AR45bp
17	3040160	Curva Ø 35	Elbow	1	
18	750670	Girello 1" 1/2 G	Ring nut	1	
19	1880460	Guarnizione OR Ø 29x3	O-ring	1	Viton AR45LFP
20	390290	Guarnizione OR Ø 29x3	O-ring	1	AR45bp
21	3120130	Segmento	Piston ring	3	
22	3120090	Camicia	Sleeve	3	
23	3120082	Membrana	Diaphragm	3	BlueFlex AR45LFP
24	3120080	Membrana	Diaphragm	3	NBR AR45bp
25	3120081	Membrana	Diaphragm	3	Viton
26	3120085	Membrana	Diaphragm	3	Desmopan
27	3120120	Piastra	Plate	3	
28	3120101	Perno AISI 316L	Hub pin	3	C25 (a) AR45LFP
29	3120100	Perno	Hub pin	3	C25 (a) AR45bp
30	3120790	Dado M8 AISI 316L	Nut	3	C20 AR45LFP
31	3120110	Dado M8 AISI 304	Nut	3	Inox C20 AR45bp
32	3120020	Testa	Head	3	
33	1880450	Anello seeger Øi 14	Ring	6	
34	3120070	Pistone Ø 54	Piston	3	
35	380300	Spina	Pin	3	
36	3120180	Biella	Connecting-rod	3	
37	1460490	Anello seeger Øi 47	Ring	2	
38	380230	Cuscinetto	Bearing	1	
39	1300120	Anello biella	Ring	2	
40	3120500	Albero marcato DD	Shaft	1	AR45LFP/bp C
41	3120160	Anello tenuta	Ring	1	
42	961790	Anello seeger Øi 68	Ring	1	
43	3240290	Protezione cardano	Cardan protection	1	
44	320622	Rondella	Washer	4	Inox AR45LFP
45	320620	Rondella	Washer	4	AR45bp
46	820672	Vite TCEI M10x16	Screw	4	Inox C10 AR45LFP
47	820670	Vite TCEI M10x16	Screw	4	C10 AR45bp
48	3120380	Condotta mandata	Line	1	
49	3120051	Condotta	Line	1	
50	740290	Guarnizione OR Ø 14x1,78	O-ring	1	

Pos	Cod.	Descrizione	Description	Q.ty	Note
41	3120690	Tappo	Plug	1	C2
42	1140451	Guarnizione OR Ø 20,24x2,62	O-ring	1	Viton AR45LFP
43	1140450	Guarnizione OR Ø 20,24x2,62	O-ring	1	AR45bp
44	3120440	Girello 1" G	Ring nut	1	
45	3120460	Curva Ø 25	Elbow	1	
46	620342	Vite TE M10x20	Screw	4	Inox C30 AR45LFP
47	620340	Vite TE M10x20	Screw	4	C30 AR45bp
48	3120140	Piede	Foot	2	
49	880530	Tappo 3/8" G	Plug	1	C20
50	3120010	Corpo pompa	Pump body	1	
51	3120240	Serbatoio	Tank	1	C20
52	650920	Guarnizione OR Ø 53,65x2,62	O-ring	1	
53	1040320	Tappo rosso	Plug	1	
54	961780	Cuscinetto	Bearing	1	
55	720030	Guarnizione OR Ø 22,22x2,62	O-ring	1	
56	3120271	Vite TE M8x65	Screw	24	Inox C10 AR45LFP
57	3120270	Vite TE M8x65	Screw	24	C10 AR45bp
58	3120640	Anello tenuta	Ring	1	
59	2840891	Guarnizione OR Ø 14x2	O-ring	1	Viton AR45LFP
60	2840890	Guarnizione OR Ø 14x2	O-ring	1	AR45bp
61	3120170	Albero marcato DL	Shaft	1	AR45LFP/bp SP
62	3120760	Rondella	Washer	3	Inox
63	2280950	Linguetta	Key	1	(d)

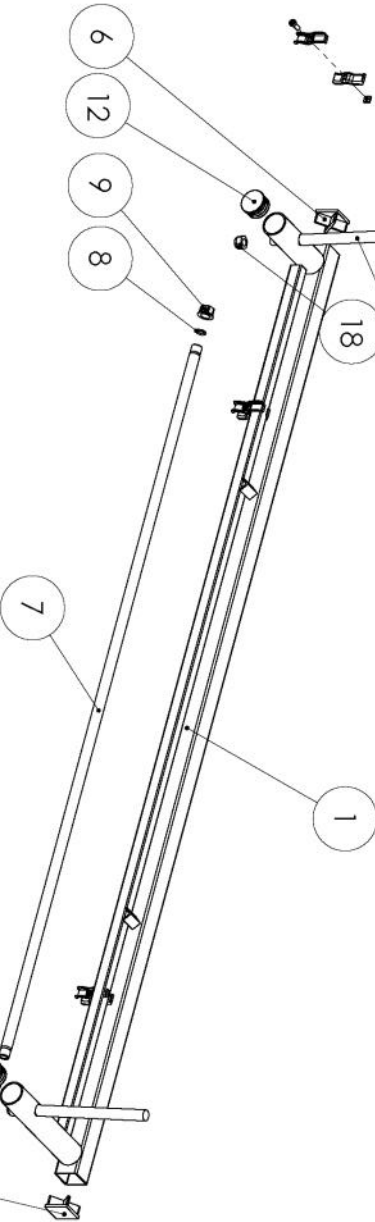
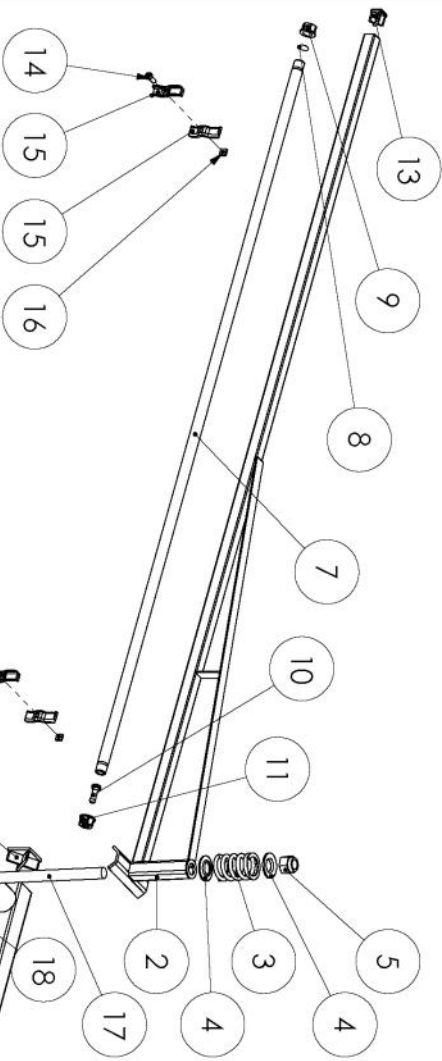
(a) Avvitare con Loxeal 83-21 Frenafilletti FORTE (Verde) codulo lato pistone.

Screw with Loxeal 83-21 thread lock STRONG.

(d) Fornito nei kit applicazioni.

Supplied in the kit applications.

6M BOOM



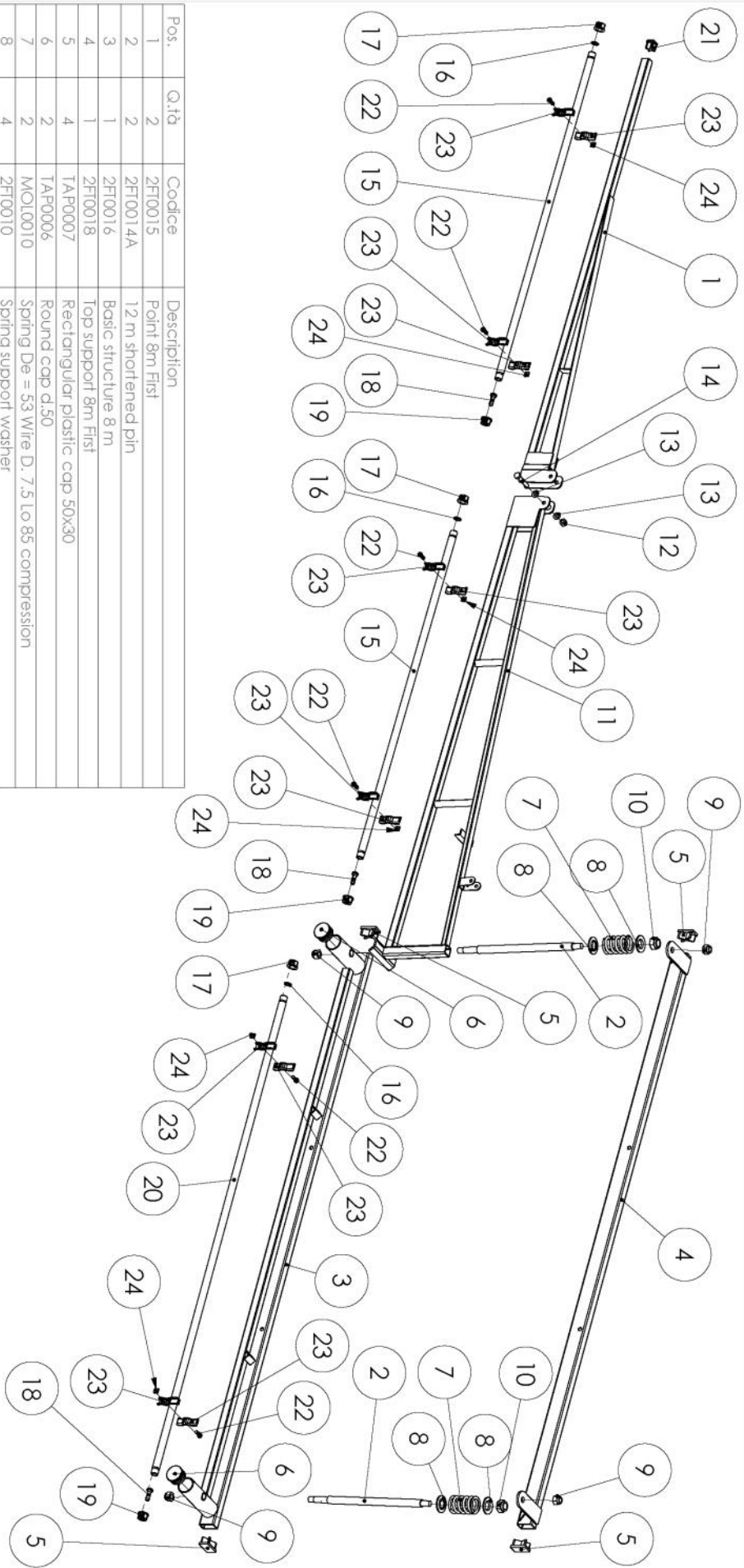
1	1	2FT0191	6 m offset basic structure
2	2	2FT0012	Tip 6 mlt
3	2	MOL0010	Spring De = 53 Wire D. 7.5 Lo 85 compression
4	4	2FT0010	Spring support washer Di.22xD.50
5	2	DAD0015	M22 zinc-plated self-locking nut
6	2	TAP0005	Square plastic cap 50x50
7	3	BD158F4	STAINLESS STEEL 4 holes int. 500 L = 1580
8	3	AOR0012	Gasket G1 00220 for female cap 'OR' d.14x3 - ARAG
9	3	TAP0011	Female cap 1/2 Gas 210 2020 - ARAG
10	3	RPC0072	Hose connector with gasket d.10 - 28.F.00410 METAL.PI
11	3	RPC0016	1/2 Gas 200 2020 - ARAG
12	2	TAP0006	Round cap d.50
13	2	TAP0001	Square plastic cap 25x25
14	6	VIT0046	UNI 5931 galvanized TCEI M8x 20 screw
15	12	2BR0073	Hook for tube D.21.3
16	6	DAD0004	Square nut M8
17	2	2FT0186	Pin shortened 4,5-6 m
18	2	DAD0017	Low zinc-plated M16 self-locking nut
19	12	4012747	



20	Single Nozzle Body	547204
21	Nozzle Cap BLUE	40009204
21	Nozzle Cap RED	30009204
21	Nozzle Cap BROWN	70009204
21	Nozzle Cap WHITE	20009204
22	Nozzle Cap Seal	040002204
23	Triple Jet	7472104



8M BOOM



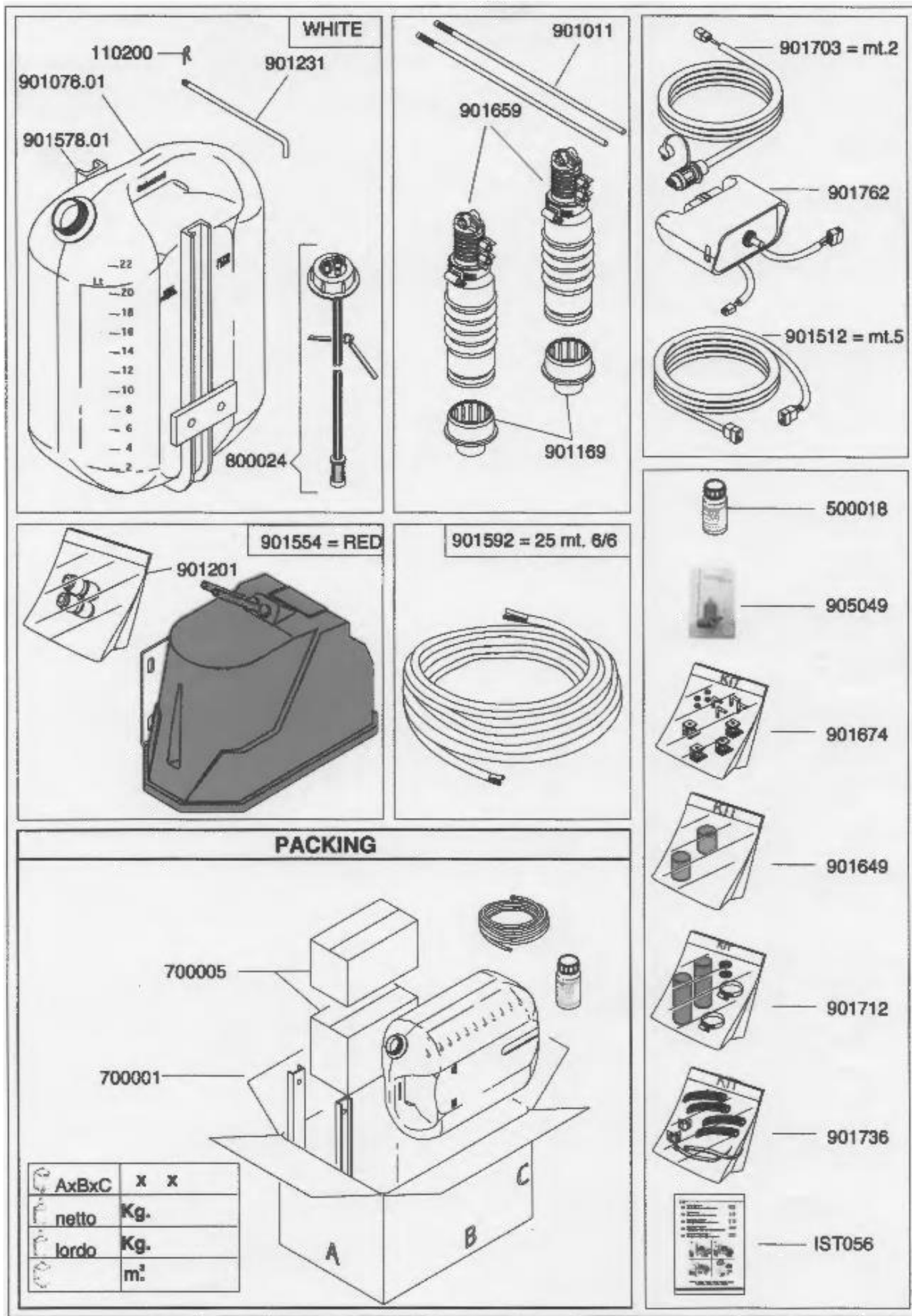
Pos.	Q.tà	Codice	Description
1	2	2FT0015	Point 8m First
2	2	2FT0014A	12 m shortened pin
3	1	2FT0016	Basic structure 8 m
4	1	2FT0018	Top support 8m First
5	4	TAP0007	Rectangular plastic cap 50x30
6	2	TAP0006	Round cap d.50
7	2	MOL0010	Spring De = 53 Wire D. 7.5 Lo 85 compression
8	4	2FT0010	Spring support washer
9	4	DAD0007	M16 zinc-plated self-locking nut
10	2	DAD0022	Low self-locking nut M22 galvanized
11	2	2FT0019	Arm 8 m first
12	2	DAD0001	M10 zinc-plated self-locking nut
13	4	RON0001	Dn 10 galvanized washer UNI 6592-R 40
14	2	VIT0044	UNI 5737 galvanized TE M10x 60 screw
15	4	BD108F3	STAINLESS STEEL 3 holes int. 500 L = 1080
16	5	AOR0012	Gasket G10020 for female cap 'OR' d.14x3 - ARAG
17	5	TAP0011	Female cap 1/2 Gas 210 2020 - ARAG
18	5	RP00072	Hose connector with gasket d.10 - 28.F.00410 METAL.PI
19	5	RP00016	1/2 Gas 200 2020 - ARAG
20	1	BD158F4	STAINLESS STEEL bars 4 holes int. 500 L = 1580
21	2	TAP0001	Square plastic cap 25x25
22	10	VIT0046	UNI 5931 galvanized TCEI M8x 20 screw
23	20	2BR0073	Hook for Tube D.21.3
24	10	DAD0004	Square nut M8

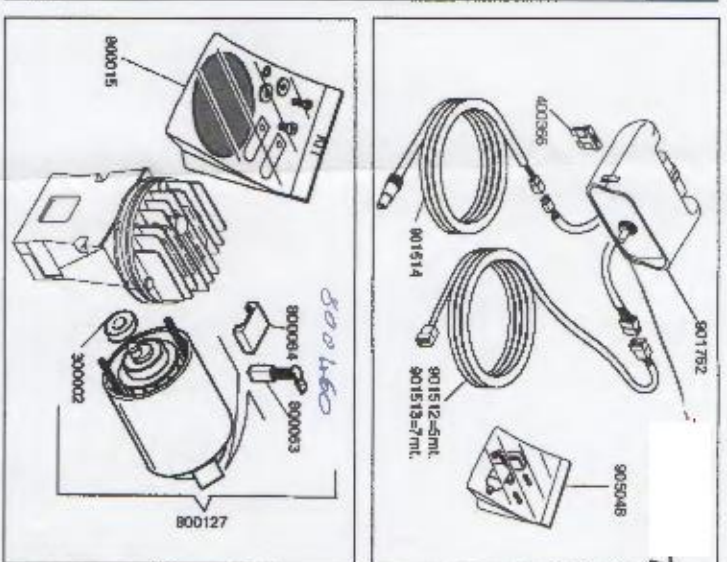
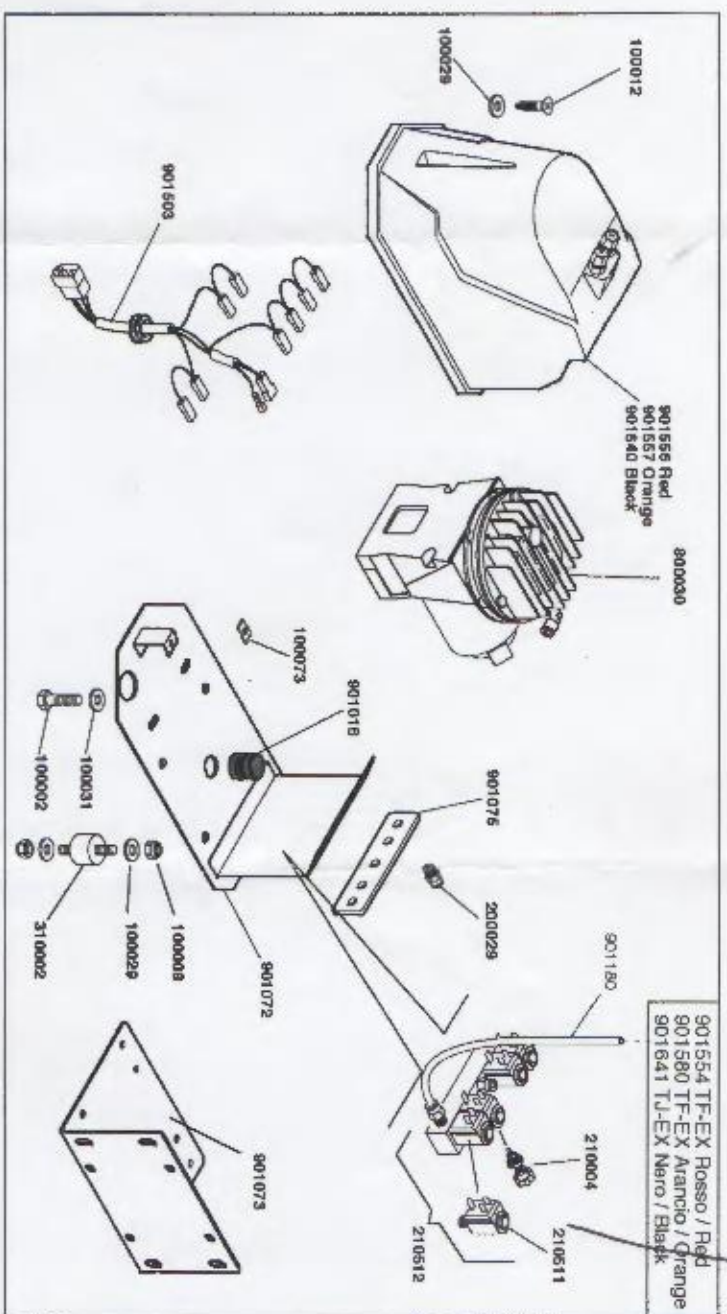
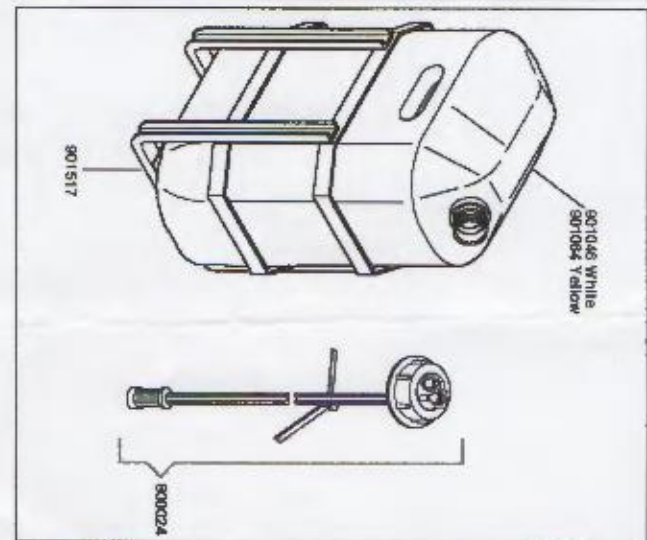
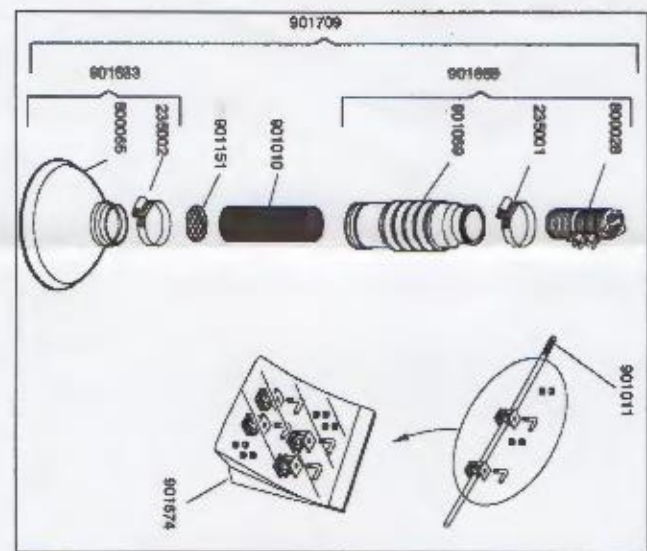


20	Single Nozzle Body	547204
21	Nozzle Cap BLUE	40009204
21	Nozzle Cap RED	30009204
21	Nozzle Cap BROWN	70009204
21	Nozzle Cap WHITE	20009204
22	Nozzle Cap Seal	040002204
23	Triple Jet	7472104



GBAM12 large foam marker

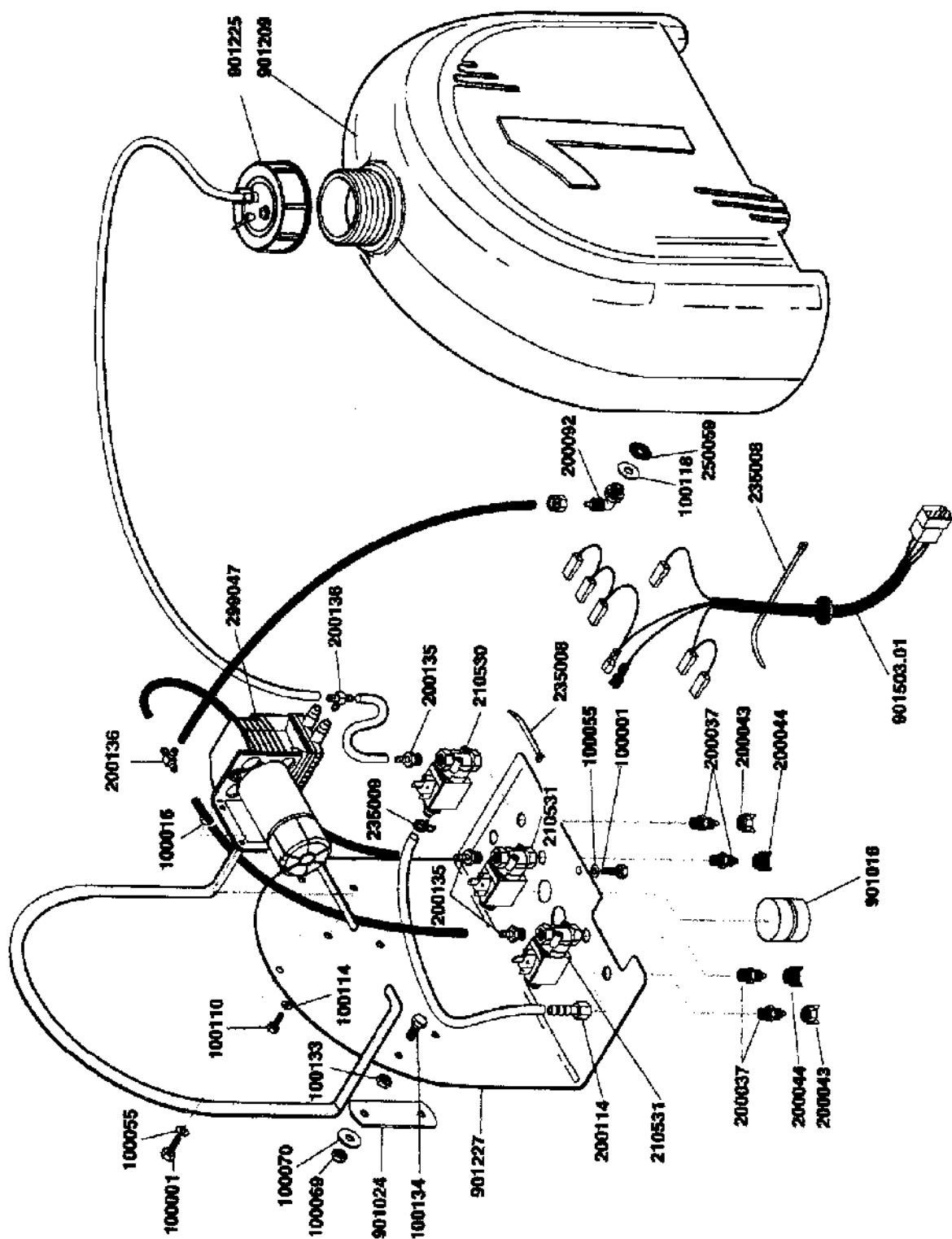
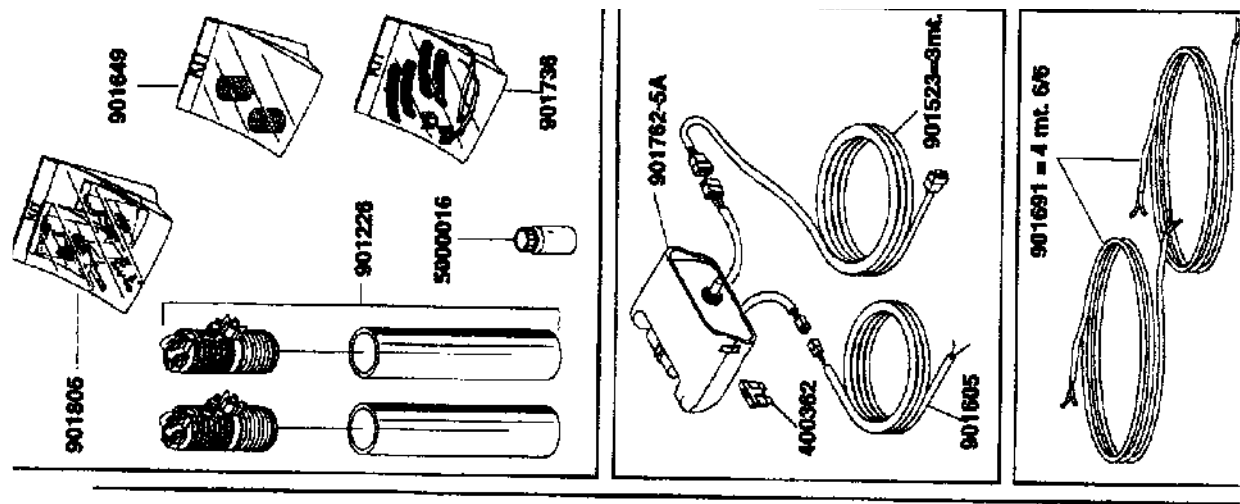




ColorsCode	ColorColor	ColorColor
901538	ROSSO / RED	BIANCO / WHITE
901538-RY	ROSSO / RED	GIALLO / YELLOW
901702	NERO / BLACK	BIANCO / WHITE
901538-01	Senza quadro elettrico/ without control box	
901538-02	Senza tubazione / without pipes	
901538-03	Senza quadro elettrico e tubazione / without control box and pipes	



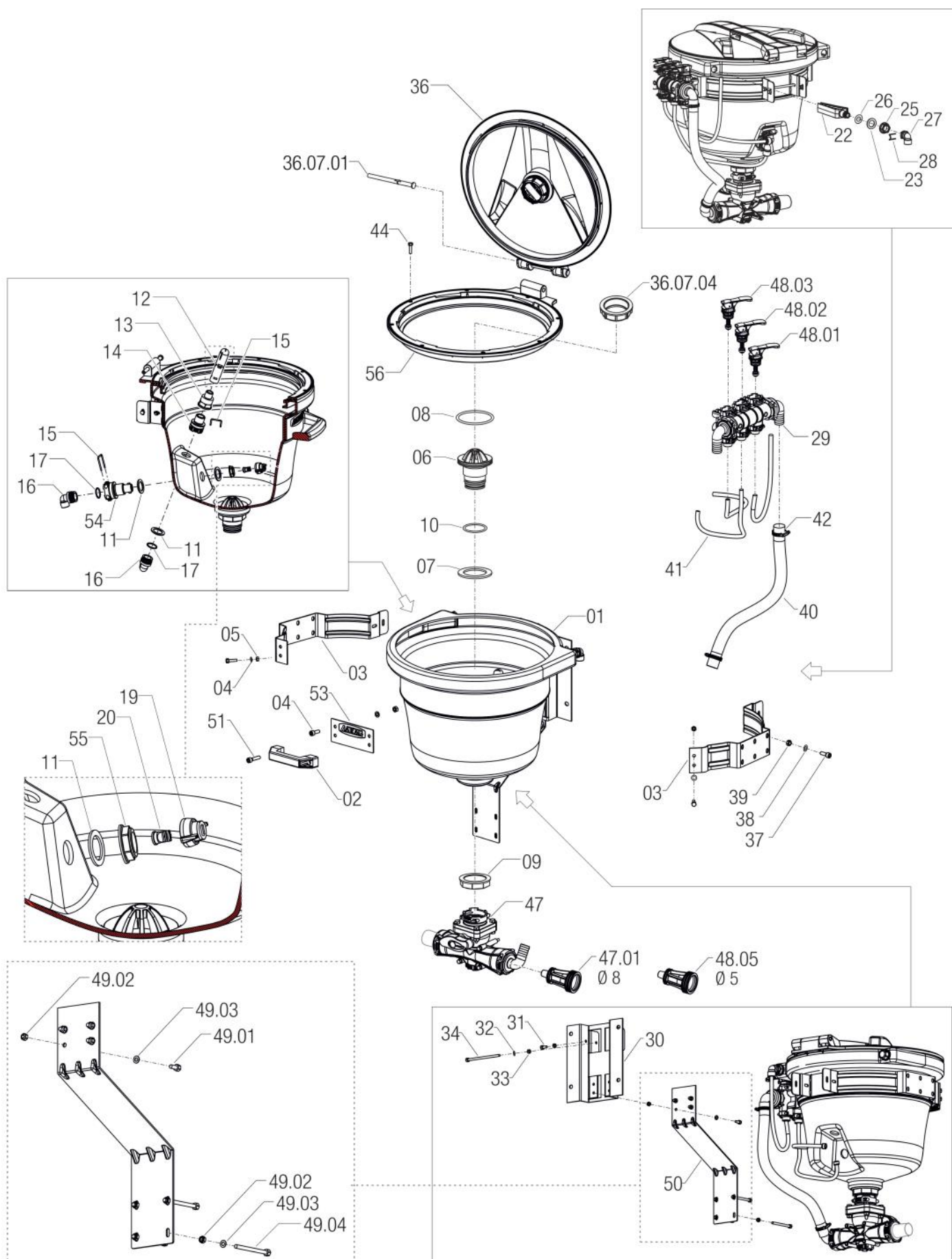
GBAM10 mini foam marker



CODE

Chemical Mixer Hopper (option)

1023305



CODE

1023305

Chemical Mixer Hopper (option)

REFERENCE	CODE	DESCRIPTION
01	0101023305	TANK MIXER NIAGARA 20LT
02	0401023305	HANDLE MIXER NIAGARA 20LT
03	5401023305	STEEL BAND MIXER NIAGARA
04	L52C1V	SCREW TCEI 8X20 INOX UNI 5931
05	15201B	NUT M 8X13X6,5 UNI5588 * INOX
06	0201033305	TANK DISCHARGE FITTING
07	70004G	FLAT GASKET 59X86X4 EPDM
08	V76011G	OR 3,53X82,14 VITON
09	0702502	BACK NUT 2"
10	V32011G	OR 3,53X41,28 VITON
11	51004G	FLAT GASKET 27,5X39,5X2,5 EPDM
13	3202542	REDUCTION F-M 3/4"-1/2"
14	330942	HOSETAIL T3F 3/4"M
15	300010	FORK D.3 DIST.29
16	01C31911	ELBOW T3M AR D.10
17	85011G	ORING 2,62X25,07 EPDM
19	30809204	QUICK FITTING CAP FLOODJET RED
20	01041FED224	DEFLECTOR 140° NOZZLE 10.0 BLACK
22	5301033305	WASHING DEFLECTOR NIAGARA
23	20004G	FLAT GASKET 21X33X2 EPDM
25	0202502	BACK NUT 1/2"
26	65011G	OR 2,62X12,37 EPDM
27	01C10911	ELBOW T1F AR D.10
28	100010	FORK D.2 DIST.16
29	005035MT364	3W.MAN.VALVES UNIT T5 NIAGARA NO H.
30	0501033305	FIX. STRUCT.TANK MIXER NIAGARA
31	F42M1V	SCREW 6X14 INOX
32	3F202B	WASHER 6,2X12X0,8 INOX
33	14221B	SELF-LOCKING NUT M6 INOX UNI7474
34	442M1V	SCREW TE 6X120 INOX
36	009042653	HINGED LID D.355 C/W LABYR. NO RING
36.07.01	040060653	PIN FOR ARM HINGED LID
36.07.04	0702002	FLY-NUT 2"
37	K52M1V	SCREW TE 8X25 INOX
38	0H202B	FLAT WASHER 8,4X15X1,5 INOX
39	15201B	NUT M 8X13X6,5 UNI5588 * INOX
40	0601033305	PVC HOSE D.25X33 L.45CM
41	0701033305	COPEY HOSE 8X10 L.45 CMS.
42	1601033305	INOX HOSE CLAMP FOR HOSE D.20/32
44	F52S7V	SELF-T. SCREW FOR PLAST.5X16 INOX
47	10M354	NIAGARA MIXING VALVE
47.01	0801033305	NOZZLE D.8 NIAGARA
48.01	005U150T364	BLACK HANDLE KIT MODUL. T5
48.02	005I150T364	RED HANDLE KIT MODUL. T5
48.03	105I150T364	YELLOW HANDLE KIT MODUL. T5
48.05	3801033305	NOZZLE D.5 NIAGARA GREY
49.01	F42M1V	SCREW 6X14 INOX
49.02	14221B	SELF-LOCKING NUT M6 INOX UNI7474
49.03	3F202B	WASHER 6,2X12X0,8 INOX
49.04	W42M1V	SCREW 6X80 INOX
50	5501023305	FIX. STRUCT.VENTURI MIXER NIAGARA
51	M52C1V	SCREW TCEI 8X35 INOX UNI 5931
52	0H202B	FLAT WASHER 8,4X15X1,5 INOX
53	1401023305	HANDLE SUPPORT NIAGARA 20 LT
54	182004	QUICK COUPL. NOZZLE HOLDER T3F FIT.
55	0302502	BACK NUT 3/4"
56	120240653	ANELLO BAION.RIB.D.355 S/BOR C/GUAR